

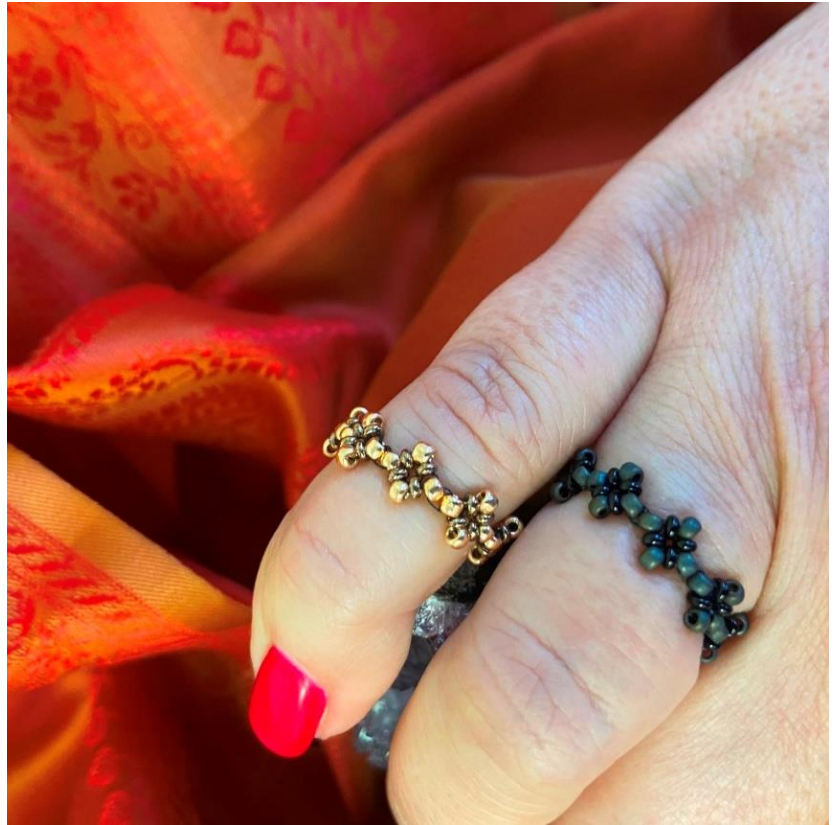
# *Demi RAW*

## *Ring*

*By Lizelle Hards*

### MATERIALS

Appx 1GM Toho Round Seed Beads Size 11/0 (SB)  
Appx 40 Toho Demi Round Seed Beads Size 11/0 (DB)  
1.5YD Beading Thread



### INSTRUCTIONS

1. On a comfortable length of thread, pick up 1SB, 1DB, 1SB, 1DB, 1SB, 1DB, 1SB & 1DB (figure1). Go through all the beads and the first SB (figure 2) to form a right-angle weave unit (RAW). (figure 3)
2. Go around the unit again, but this time, only go through the four DB's.(figure 4) Make sure that the tread is tight so that the SB's "pop" out.
3. Exit the last SB (figure 5). Pick up 1SB and go through the seed bead that the thread is exiting, from the opposite side. Pull the thread tight so the two seed beads sit next to each other. (figure 6) Exit from the top bead.
4. Pick up 1DB, 1SB, 1DB, 1SB, 1DB, 1SB & 1DB and go seed bead you added in step 3 (figure 7). Go through all the DB's only as you did in step 2, exiting the last SB.
5. Repeat step 3 and 4 until the ring is the length required.
6. To close the ring connect the last SB with the first SB (figure 8). Reinforce the thread path several times.

